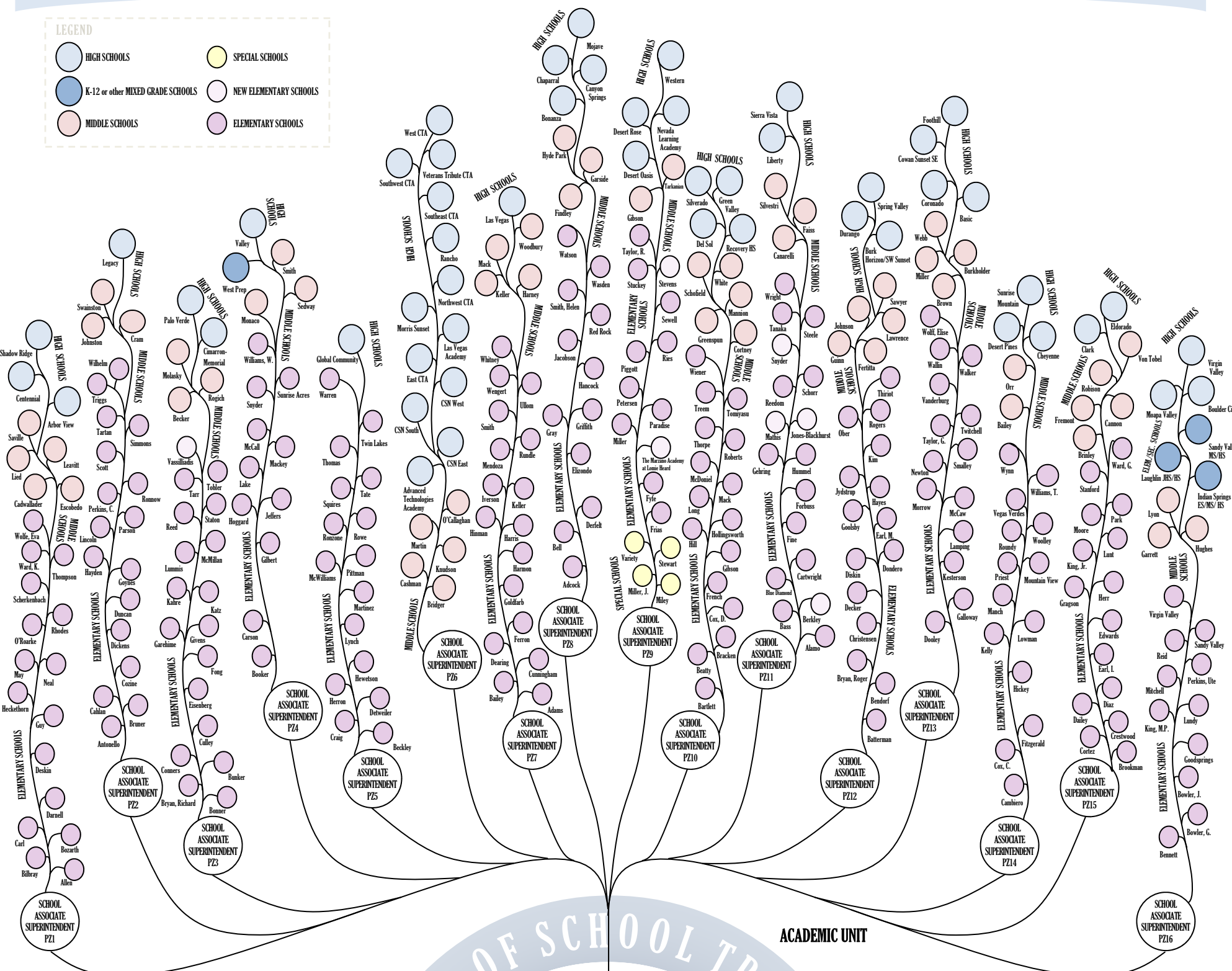


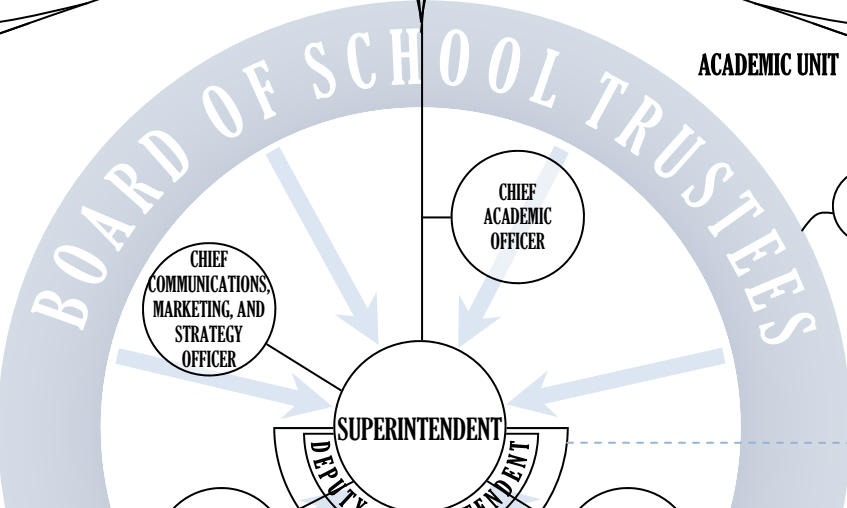
# CLARK COUNTY SCHOOL DISTRICT

## LEGEND

- HIGH SCHOOLS
- SPECIAL SCHOOLS
- K-12 or other MIXED GRADE SCHOOLS
- NEW ELEMENTARY SCHOOLS
- MIDDLE SCHOOLS
- ELEMENTARY SCHOOLS

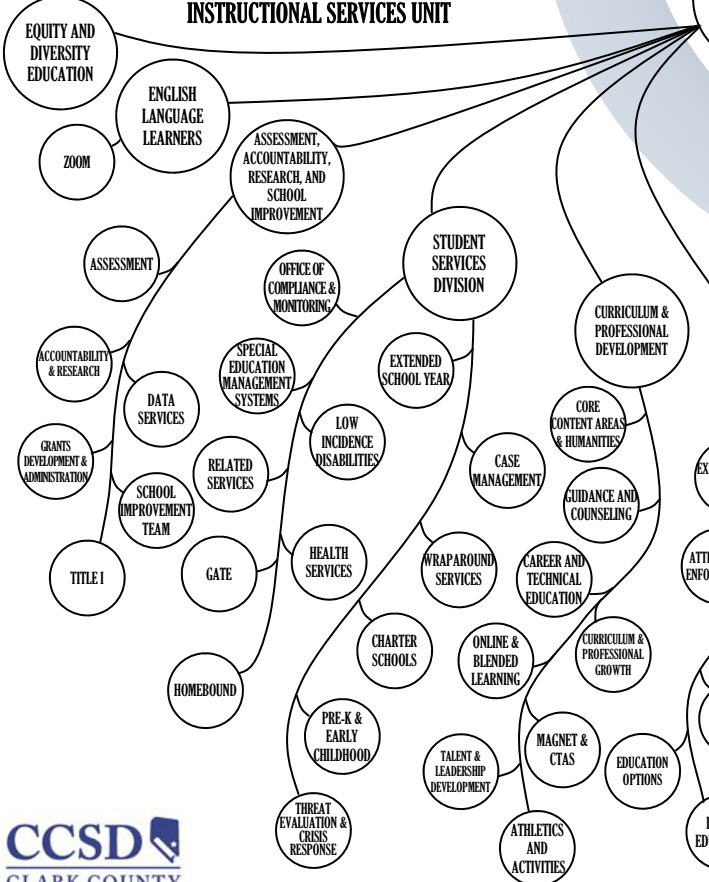


## ACADEMIC UNIT



- ### ANCILLARY SUPPORT
- Community and Government Relations
  - Special Assistant to the Supt/Liaison to the Board of School Trustees
  - Diversity and Affirmative Action and Title IX
  - Employee-Management Relations
  - Internal Audit
  - Legal
  - Police Services
  - Turn Around Support

## INSTRUCTIONAL SERVICES UNIT



## OPERATIONAL SERVICES UNIT

